

Yungtay Elevator

Hitachi Yungtay Elevator Co., Ltd.

<https://en.hitachi-yungtay.com.tw>

Headquarter +886 2 2717-2217
11F., No. 99, Fuxing N. Rd., Songshan Dist., Taipei City 105, Taiwan (R.O.C.)

Taoyuan Plant +886 3 325-4161
No. 1352, Chunri Rd., Taoyuan Dist., Taoyuan City 330, Taiwan (R.O.C.)

Building System Branch +886 2 2709-3355
No. 6, Aly. 54, Ln. 63, Sec. 2, Dunhua S. Rd., Da'an Dist., Taipei City 106, Taiwan (R.O.C.)

Taoyuan Branch +886 3 317-1879
No. 29, Ln. 1314, Chunri Rd., Taoyuan Dist., Taoyuan City 330, Taiwan (R.O.C.)

Taichung Branch +886 4 2472-7878
3F., No. 98, Sec. 2, Dongxing Rd., Nantun Dist., Taichung City 408, Taiwan (R.O.C.)

Tainan Branch +886 6 303-8600
No. 18, Dongqiao 1st Rd., Yongkang Dist., Tainan City 710, Taiwan (R.O.C.)

Kaohsiung Branch +886 7 761-5161
No. 200, Dashun 3rd Rd., Lingya Dist., Kaohsiung City 802, Taiwan (R.O.C.)

Service Center +886 2 2701-7060
No. 6, Aly. 54, Ln. 63, Sec. 2, Dunhua S. Rd., Da'an Dist., Taipei City 106, Taiwan (R.O.C.)



VDI 4707



ISO 9001



ISO 14001



ISO 45001

TEL / +886 2 2717-2217
FAX / +886 2 2718-6082

Catalog No.YT-EL-0181 2022.12

Our Company reserves the rights to change the specifications, please be reminded that the information in regard with those changes shall not be notified later. Please contact our Company for further details.



GET THE COSY LIFE

MRL Residential Elevator - 8 Passenger



A pioneer leader in line with the new evolution of the spirit of environmental protection, Hitachi Yungtay Elevator will bring you higher-quality life and a future.

Humanity

More Considerate
Human Interface

Quality

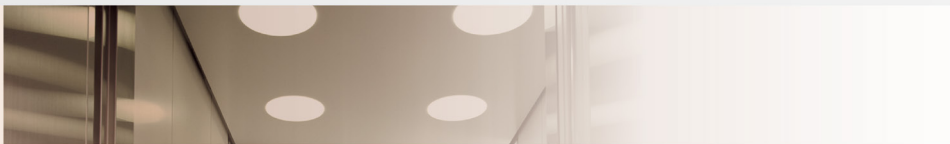
Higher Quality
Texture

Energy Saving

More environment-friendly
space design

- 3 Car Design
- 7 Entrance Design
- 8 Handrail
- 9 Operating Panel
- 10 Functions and Equipment
- 12 Dimensions of Entrance
- 13 Hoistway Layout

Elevate Your Quality of Life



European Classic

Silent Steady · Eternal Nobility



CH12

| | | |
|-----------------|---|-------|
| Model | CH12 | |
| Ceiling | Steel Plate with Baked Painting (1-51) | |
| | Matching with Milky White Acrylic Plate | |
| | LED Lighting | |
| Operating Panel | Embedded Stainless Steel with Mirror Finish | |
| | Model: KF-D2FT (Patent Certificate Utility Model No. M420525) | |
| | Minimum Width of Front Wall | 250mm |
| Car Door | Steel Plate with Colored Pattern (A111) | |
| Front Wall | Steel Plate with Colored Pattern (SNW-9) | |
| Side Wall | Steel Plate with Colored Pattern Left / Right Plate : (SNW-9) Middle Plate : (A111) | |
| Rare Wall | Steel Plate with Colored Pattern Left / Right Plate : (SNW-9) Middle Plate : (A111) | |
| | Mirror Plate Stainless Steel Decorative Strip | |
| Kickplate | (SUS) Stainless Steel Plate | |
| Floor | Faux Stone Floor Tile : (8T7) Frame : (8T0) | |



Classic Magnificence

The Poetry of Space, Forge of Texture



UH1

| | | |
|-----------------|---|-------|
| Model | UH1 | |
| Ceiling | Steel Plate with Baked Painting (1-51) | |
| | Matching with Milky White Acrylic Plate | |
| | LED Lighting | |
| Operating Panel | Embedded Stainless Steel with Mirror Finish | |
| | Model: KF-D3FT (Patent Certificate Utility Model No. M420525) | |
| | Minimum Width of Front Wall | 250mm |
| Car Door | Steel Plate with Colored Pattern (A111) | |
| Front Wall | Steel Plate with Colored Pattern (B103) | |
| Side Wall | Steel Plate with Colored Pattern Left / Right Plate and Waist Area : (B103) Middle Plate : (A111) | |
| Rare Wall | Steel Plate with Colored Pattern Left / Right Plate and Waist Area : (B103) Middle Plate : (A111) | |
| Kickplate | (SUS) Stainless Steel Plate | |
| Floor | NPC Floor Tile (536) + Frame (505) | |



Car Design



Pure and Fresh Minimalism

Streamline of Fashion, Grace of Brightness



CH17

| | | |
|-----------------|---|-------|
| Model | CH17 | |
| Ceiling | Steel Plate with Baked Painting (1N) | |
| | Convace Area (K030A) | |
| | LED Lighting | |
| Operating Panel | Embedded Stainless Steel with Mirror Finish | |
| | Model: KF-D2FT (Patent Certificate Utility Model No. M420525) | |
| | Minimum Width of Front Wall | 250mm |
| Car Door | Steel Plate with Colored Pattern (1072) | |
| Front Wall | Steel Plate with Colored Pattern (1072) | |
| Side Wall | Steel Plate with Colored Pattern Left / Right Plate : (1072) Middle Plate : (1072) | |
| Rare Wall | Steel Plate with Colored Pattern Left / Right Plate : (1072) Decorative Line : (A101) | |
| Kickplate | Steel Plate with Colored Pattern (A101) | |
| Floor | NPC Floor Tile (505) Frame : (501) | |



Delicate Paragon

Steady Magnitude · Prime Honor



CH18

| | | |
|-----------------|--|-------|
| Model | CH18 | |
| Ceiling | Steel Plate with Colored Pattern (SNW-1) | |
| | Matching with Milky White Acrylic Plate | |
| | LED Lighting | |
| Operating Panel | Embedded Stainless Steel with Mirror Finish | |
| | Model: KF-D3FT (Patent Certificate Utility Model No. M420525) | |
| | Minimum Width of Front Wall | 250mm |
| Car Door | Steel Plate with Colored Pattern (SNW-1) | |
| Front Wall | Steel Plate with Colored Pattern (SNA-7) | |
| Side Wall | Steel Plate with Colored Pattern Left / Right Plate : (SNA-7) Middle Plate : (SNW-1) | |
| Rare Wall | Steel Plate with Colored Pattern Left / Right Plate : (SNA-7) Middle Plate : (SNW-1) | |
| | Mirror Plate Stainless Steel Decorative Strip | |
| Kickplate | (SUS) Stainless Steel Plate | |
| Floor | NPC Floor Tile (531) + Frame (536) | |



Entrance Design



| | |
|------------|---|
| Door Panel | Center - opening Doors |
| | Stainless Steel with Hairline Finish (Option) |
| Jamb Frame | Wide Type (Option) |
| | Stainless Steel with Hairline Finish |
| Sill | Extruded Hard Aluminum |



| | |
|------------|--|
| Door Panel | Center - opening Doors |
| | Steel Plate with Baked Painting (1-60) |
| Jamb Frame | Narrow-Vertical Type |
| | Stainless Steel with Hairline Finish |
| Sill | Extruded Hard Aluminum |

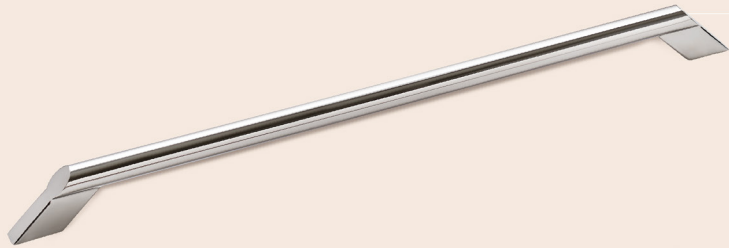
*Control Panel Location: The standard configuration is located at the broadside of the top floor entrance.



| | |
|------------|--|
| Door Panel | Center - opening Doors |
| | Steel Plate with Baked Painting (1-25) |
| Jamb Frame | Narrow Type |
| | Stainless Steel with Hairline Finish |
| Sill | Extruded Hard Aluminum |



Handrail OPTION



NR-6
Mirror Finished Stainless Steel
Diameter : 38mm Φ



NR-108
Stainless Steel inlaid with Solid Wood
(imitation walnut)
Diameter : 38mm Φ
Optional for Antibacterial Material



NR-112
Stainless Steel inlaid with Solid Wood
(imitation sen)
Diameter : 38mm Φ
Optional for Antibacterial Material



NR-113
Stainless Steel inlaid with
Hairline Stainless Steel
Diameter : 38mm Φ



NR-125
Stainless Steel inlaid with Genuine Leather
Diameter : 38mm Φ

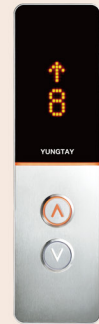
*This catalog is only for reference; any modifications shall not be additionally informed, and the specifications still depend on the actual conditions.



Operating Panel



OPY-HD2T
Rotational Operating Panel
(hidden interphone attached)



FOX LED



FOX LED
(For Wheelchair Use)
OPTION



HF-LM5
OPTION



VF-LM5
OPTION



W.FOX OPB
(For Wheelchair Use)
OPTION

*This catalog is only for reference; any modifications shall not be additionally informed, and the specifications still depend on the actual conditions.



Functions and Equipment

Operating Functions

○ Standard △ Option

| | | |
|--|--|---|
| Overload Protection Function | The load inspection apparatus installed on the bottom of the elevator car will send a warning and cannot be operated whenever overload is detected. | ○ |
| Energy Saving Function | The car lighting and fans will stop running to save energy when the car is vacant for a while and will restart running if there is any calling from other floors. | ○ |
| Low-Speed Safe Landing while Malfunction | If the car has stopped between floors due to equipment malfunction, the car will automatically move to the nearest floor at low speed and open the door. Meanwhile, the elevator will stop service when the car is vacant. | ○ |
| Emergency Lighting | In the event of power failure, the emergency lighting installed on the car ceiling will automatically ignite. | ○ |
| Overspeed Protection | The elevator will automatically cut off the power source if the car exceeds the specified speed. | ○ |
| Overload Return Safety Device (ORS) | If an external force interferes during the door closing/opening, and this force exceeds the specified threshold, the elevator door will move in the reverse direction to ensure safety. | ○ |
| Car Call Cancellation | Deregister a mistaken floor by pressing the same floor button twice within 3 seconds | ○ |
| Next Floor Landing Function | When the car arrives on the floor but cannot fully open the door for any reason, such as object blocking, the car will travel to the next floor and automatically open the door. Also, when the car cannot successfully close the door due to the object stuck in the sill, the door will automatically open repeatedly until the object is removed. | ○ |
| Car Call Cancellation at Reversal | When the elevator changes direction, the system will cancel the previously registered floor, which can avoid invalid stops and save electricity | ○ |
| Out-of-Service Operation | For building management needs such as nights and holidays, the elevator needs to be parked; or when the elevator demand is low, the elevator is called back to the parked floor and stopped to save energy. | △ |
| Mechanical Safety Shoe | During the door-closing process of the elevator, when the door safety shoe collides with a person or item, the elevator will stop closing and reopen the door immediately. | △ |

Signal and Display

| | | |
|---|--|---|
| Arrival Lighting in Hall (floor indicator blinking) | As the elevator travels, the directional arrows begin to flow. When the building name flashes, the elevator is about to arrive. During running: the running direction arrow moves with the running direction of the elevator. Before arrival: the button and the floor number flash. | ○ |
| Arrival Lighting in Car (landing floor button blinks) | The floor button in the car will flash to notify passengers in the car that the elevator is about to arrive. During running: the running direction arrow moves with the running direction of the elevator. Before Arrival: The button and the name of the building flash. | ○ |
| Interphone System | When an emergency occurs in the car, press the emergency call button for more than 3 seconds, and the system will dial the preset outside line to ask for help. (six groups of phone numbers can be preset) | ○ |
| Intercom | In the event of an emergency, press the emergency button to communicate with the administrator. | ○ |
| Intercom Central Management | A community group can connect a direct line to the administrative room for the central management to rescue personnel in case of an emergency. | △ |



Functions and Equipment

Comfort and Convenience

○ Standard △ Option

| | | |
|-----------------------------------|---|---|
| Infrared Light Curtain | The elevator will promptly detect any people or objects blocking the infrared light curtain and reopen the door during the closing process, improving passengers' safety. | ○ |
| Extended Door Opening Time Button | Pressing the door opening button can extend the elevator door opening hold time. | △ |

Special Operating Function

| | | |
|--|--|---|
| Automatic Landing Device for Power Failure (ALP) | In the event of a power failure, the device will replace the regular power supply, and the elevator will automatically move to the nearest floor to allow passengers to exit the car safely, thereby avoiding the situation where passengers are locked in the elevator during a power failure | ○ |
| Earthquake Emergency Operation | When the earthquake sensor is activated, the running elevator will automatically run to the nearest step and stop service. Simultaneously, "Earthquake Control" will be displayed in the operation panel. | △ |
| Fire Emergency Operation | When a fire occurs, the elevator will automatically run to the preset fire escape floor through the fire switch and then stop | △ |

Monitor and Supervision Function

| | | |
|--|--|---|
| Monitoring and Control System (CCTV) | Through this device, the superintendent of the building can observe the situation in the elevator car to prevent the occurrence of crimes. | △ |
| Card Reader Interface | Provide contact points for card reader machines in elevator halls or cars, reserve holes in the inner wall panels of the car, and assist in the installation of card reader machines so cardholders can use the elevator. | △ |
| Remote Surveillance | The remote surveillance system is the tech product of YUNATAY to serve our customers 24 hours a day. Through the advanced telecom network as well as the global elevator connection, we can grasp the safety conditions of our customers' elevators in real-time, making the passengers safer and the maintenance more efficient. | △ |
| Central Control and Monitoring System (YECM) | The YECM system transmits the elevator operation signal in the operation panel to the monitoring computer through digital communication. The administrator can monitor the running status of the elevator, set the running mode, issue control commands, perform statistical analysis of the elevator operation, make reservations, and record the faults of the elevator. | △ |
| Supervisory Panel | The device consists of a display part for monitoring the running status of the elevator, an operation part for elevator operations, and an intercom for communication with the car. | △ |

| | | | | | | |
|-------------------------|---------------------|-----------------------|-----------|----------------|--------------------|-------------------|
| Passenger | 8 persons (550KG) | Maximum Landing Floor | 8 | Power Supply | AC 3Φ 220V | AC 1Φ 220V |
| Rated Speed | 45m/min, 60m/min | Maximum Travel Height | 26m | Motor Capacity | 6KVA | 7KVA |
| Entrance Dimensions | 800mm(W)x2100mm(H) | Control Method | AC-VF | Breaker | 50A | 60A |
| Car Interior Dimensions | 1100mm(W)x1310mm(D) | Lighting Supply | AC1Φ 110V | Wire Gauge | 8mm ² | 14mm ² |
| Hoistway Dimensions | 1900mm(W)x1700mm(D) | Motor 45m/min | 4.0kw | Ground Wire | 5.5mm ² | |
| Minimum Floor Height | 2600mm | Motor 60m/min | 5.5kw | | | |

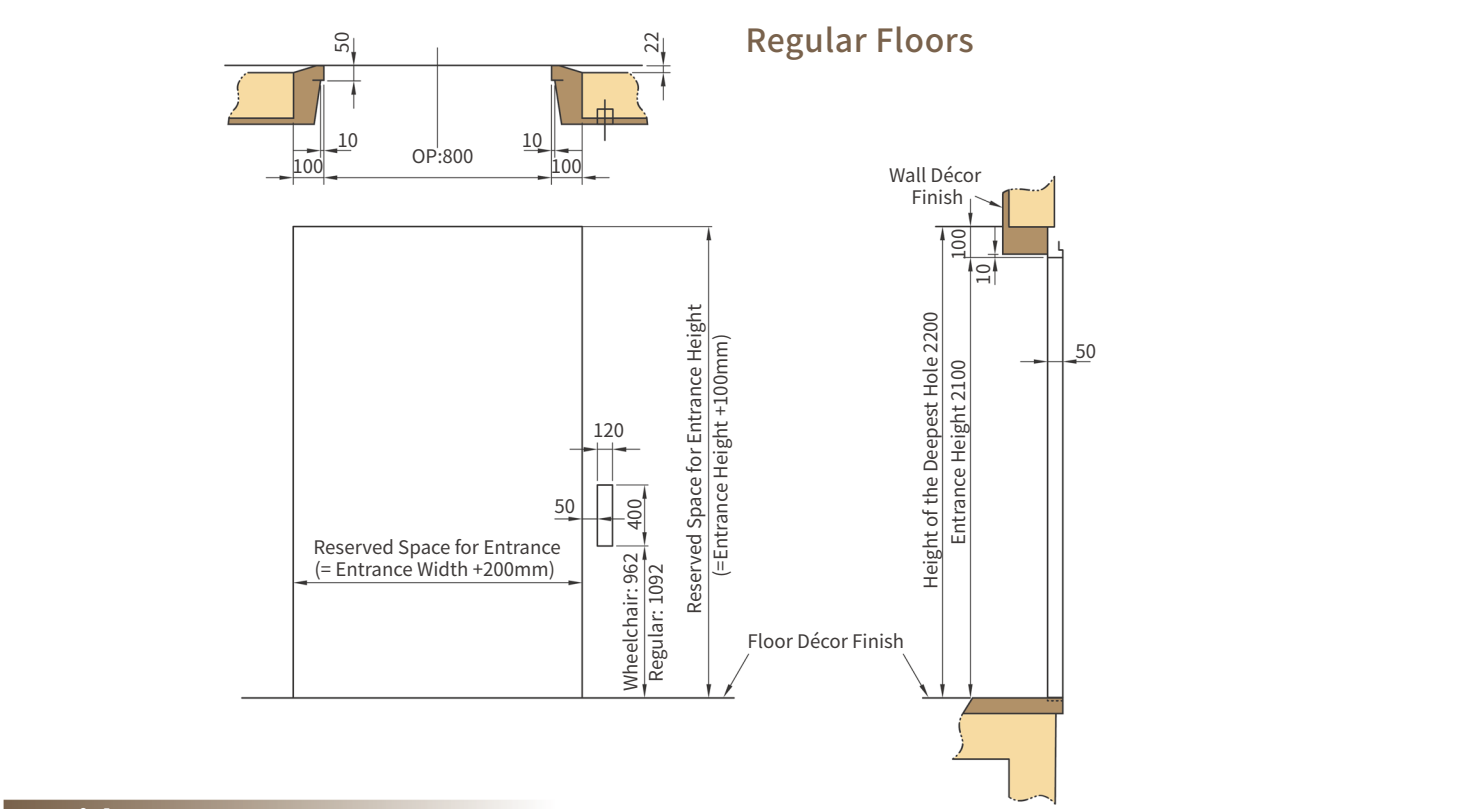
*The single-phase electric power is only suitable for 45m/min house single-family or seven households (including) on the 8th floor of a single building.
*The ones with reduced mobility only apply to pure collective housing, not for public use.



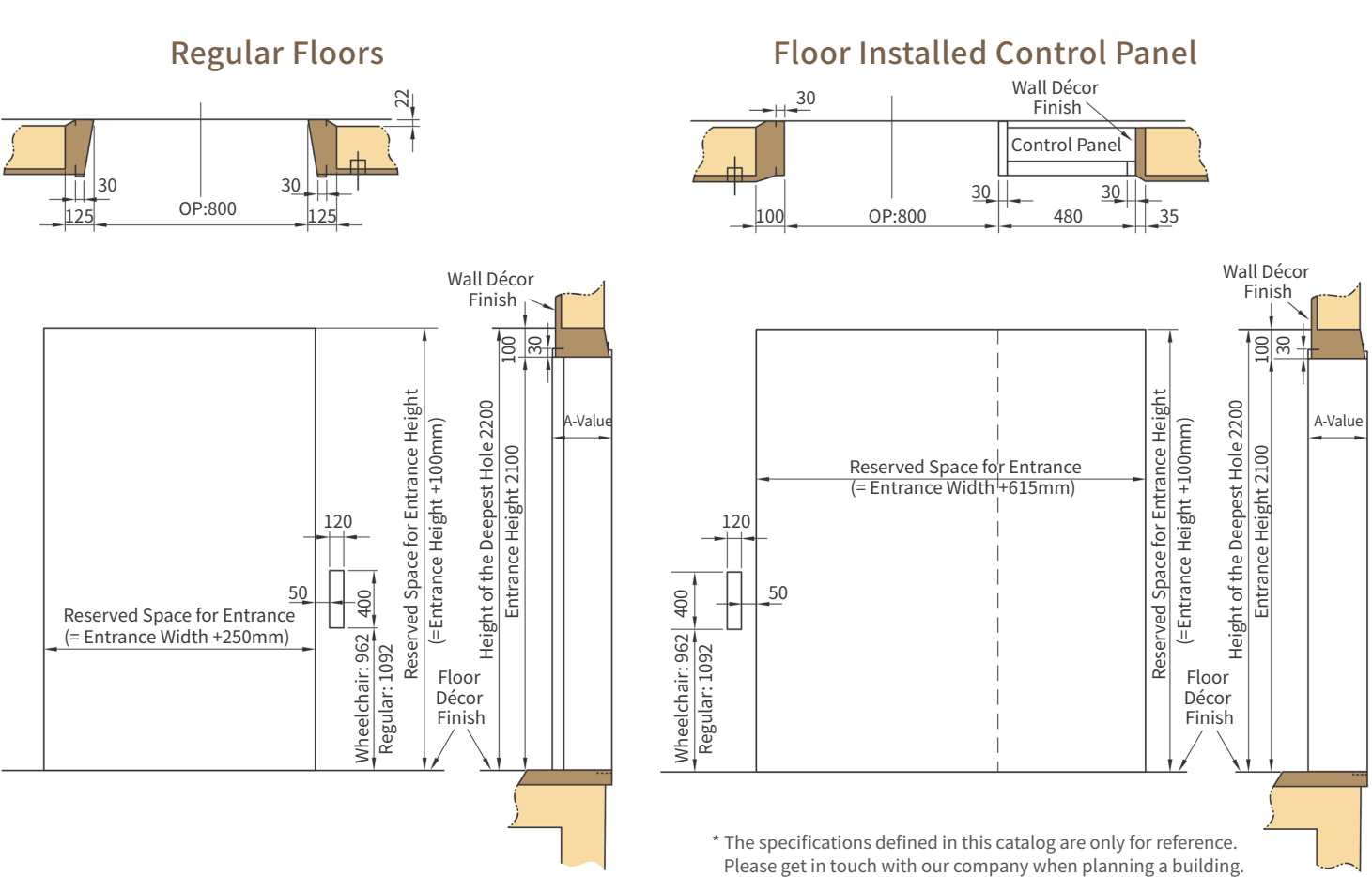
Dimensions of Entrance

Narrow Type

Wall and floor finishing (by other contractors)
Building structure (by other contractors)



Wide Type

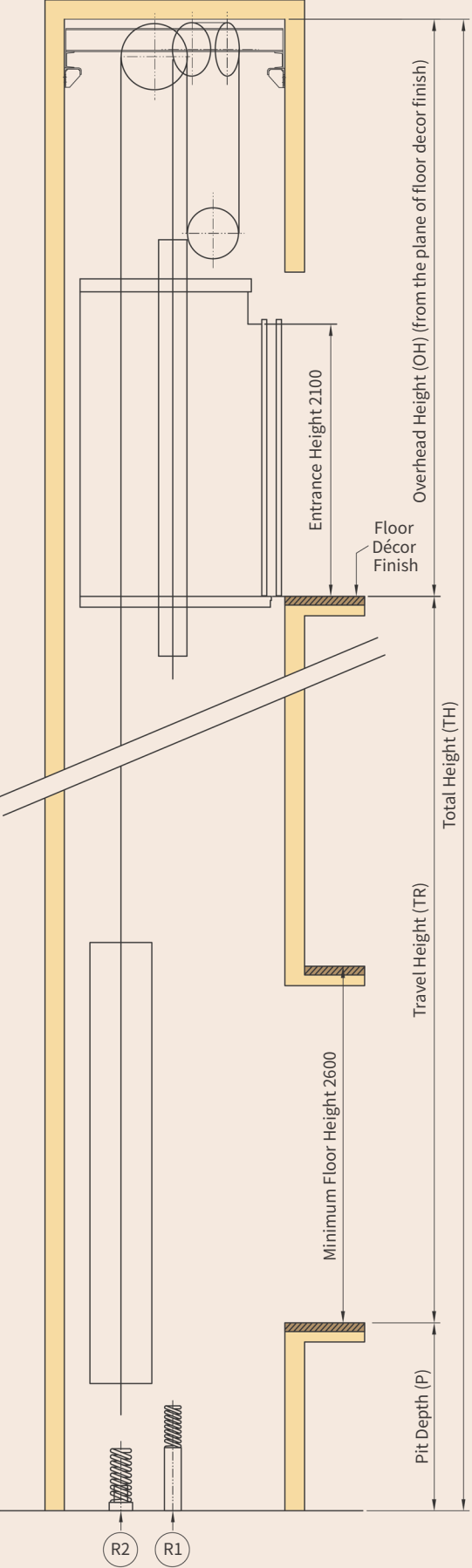


* The specifications defined in this catalog are only for reference.
Please get in touch with our company when planning a building.

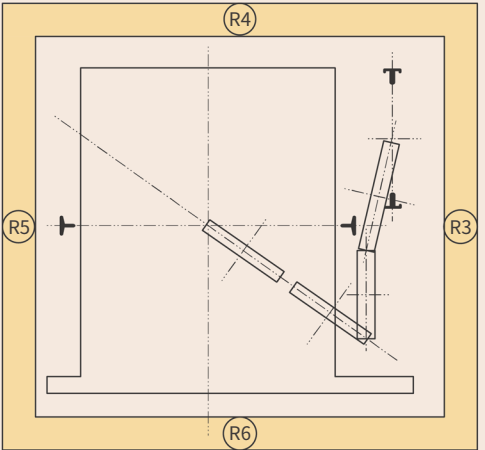
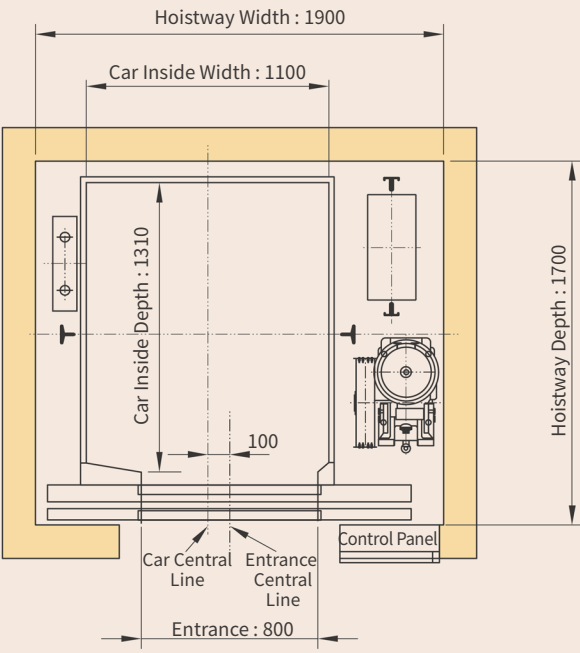


Hoistway Layout

Hoistway Section



Hoistway Floor Plan



Unit : mm

| Position | R1 | R2 | R3 | R4 | R5 | R6 | 備註 |
|----------------------|------|------|------|------|------|------|-----------|
| Reaction Loading(KG) | 6000 | 4800 | 4500 | 3200 | 2200 | 2200 | (行程26M以下) |

| Item | Rated Speed | 45 | 60 |
|--------------------------|-------------|------|------|
| Overhead Height (OH)(mm) | | 4450 | 4650 |
| Pit Depth (P)(mm) | | 1350 | 1550 |

* The specifications defined in this catalog are only for reference.
Please get in touch with our company when planning a building.



Excluded Constructions

Our company is responsible for the elevator's design, manufacture, and installation. However, the items mentioned above are not included in the elevator estimate. Therefore, the client should be responsible for entrusting the construction or electrical engineering contractor to carry out the project.

1. The construction of the hoistway is based on the drawings provided by Party B. It includes the entrances and exits of each floor, the preserve holes for buttons and indicators, and the caulking of the door frame after installation.
2. If the hoistway is of steel structure or light partition wall, support beams and columns for fixing guide rails, door frames, buttons, indicators, and other equipment; and primary iron parts for intermediate beams and reinforcing beams.
3. Piping and wiring work for emergency telephones or other equipment (such as monitors, remote monitoring systems, monitoring panels, multimedia, card reader machines and fire alarm switchboards) from the hoistway to the guard room (or administrator room, monitoring room).
4. Suppose the elevator entrance and exit doors have fire prevention functions. In that case, the piping and wiring work from the fire alarm reception switchboard to the elevator recall button to the evacuation level, and reserve a no-voltage A contact on the fire alarm reception switchboard.
5. Waterproof and drainage work for pits and concrete foundation works for buffers.
6. Primary side power supply equipment (including power supply, car lighting power supply, independent grounding system, switch, and the power receiving panel) and the piping and wiring project of leading the power supply to the hoistway.
7. Before the elevator enters the site for construction, the surrounding of the hoistway should be truly closed, and party B should install related guardrail protection equipment at the entrances and exits of each floor. If the hoistway is a glass curtain or cannot be reliably closed due to other factors, party B should provide other anti-fall measures (such as guardrails, safety nets, and other anti-fall measures). Party B must clear sundries such as formwork, wooden strips, safety nets, and steel bars in the machine room and the hoistway (if this item is not completed, due to the safety of the operation, personnel will not be dispatched to the site for construction).
8. After the machine parts are delivered to the construction site, party B should provide a storage place for the goods and tools. However, if the installation cannot be performed due to the reasons of Party A, the responsibility for keeping the machine parts shall be responsible to Party A.
9. After unpacking and installing the goods, Party B shall dispose of them at the designated place. Party A shall be responsible for clearing and transporting them to the construction site.
10. Party B shall provide the cement, sand and gravel, water, and electricity required in the construction and the power supply for installation and operation consistent with the official electricity consumption.
11. Party B shall provide the height reference line of the elevator entrance and exit and the complete reference line of the elevator wall as the basis for the elevator installation.
12. Construction of middle beam between two abreast elevators, over-widened hoistway, or installing broadside (rear) beam of the brick wall.
13. Installation of fall prevention facility of hoistway entrance before elevator installation.